



CONSULTANCY >

R-TECH Materials specialises in laboratory-based materials investigations, problem solving and research.

Our team of well qualified engineers, metallurgists, materials scientists and chemists have a wealth of experience in applying their knowledge to industrial materials problems. We cover a wide range of materials, including metals, polymers and composites across a range of applications and industries.

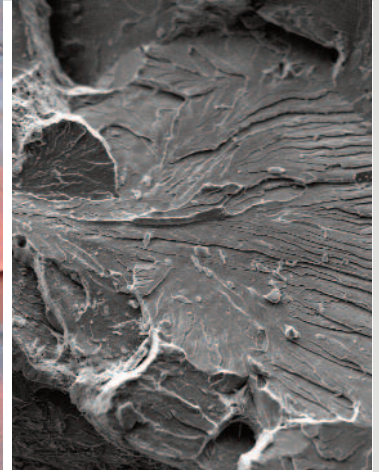
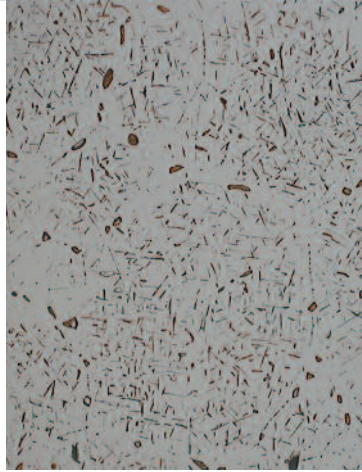
Supported by our own UKAS accredited testing, analytical and characterisation facilities, our own in-house workshop facilities, and experienced technician staff, R-TECH Materials can handle any job, no matter how large or small. We can react comprehensively and rapidly where plant down-time is critical.

Sectors covered include:

- > Automotive
- > Construction
- > Manufacturing
- > Marine
- > Metals production
- > Oil and Gas
- > Nuclear
- > Petrochemical
- > Power

Services include:

- > Expert witness
- > Failure analysis
- > Life assessment
- > Problem solving
- > Product development
- > Prototype characterisation
- > Research contracts
- > Reverse engineering
- > Structural integrity



We can offer our services in legal cases, either as expert witnesses, or providing independent laboratory services to other expert witnesses.

Working with our partners, R-TECH Materials is able to offer structural integrity and life assessment services for the power and petrochemical industries. We offer on-site metallographic replication services, and we are experienced in condition assessment of high temperature plant.

R-TECH Materials has a particular expertise in structural integrity and life assessment in austenitic stainless steels in high temperature plant.

R-TECH Materials has experience in running research projects, and can assist in helping design and run research test programmes.

.....
Examples of our consultancy services include:

- › Independent laboratory services for Expert Witnesses on gas turbine failure
- › Condition assessment of boilers
- › Failure analysis on oil drilling equipment
- › Reverse engineering on composite aircraft panel
- › Expert witness on marine weld failure
- › Structural integrity model of stainless steels
- › Failure analysis on electronic components



R-TECH Materials

t: +44 (0)1656 748 000

e: info@rtech-materials.co.uk

www.rtech-materials.co.uk